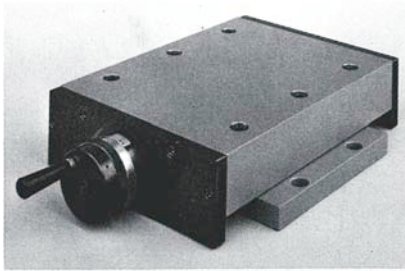


FRICTIONLESS TABLES TYPE NU

Special Model



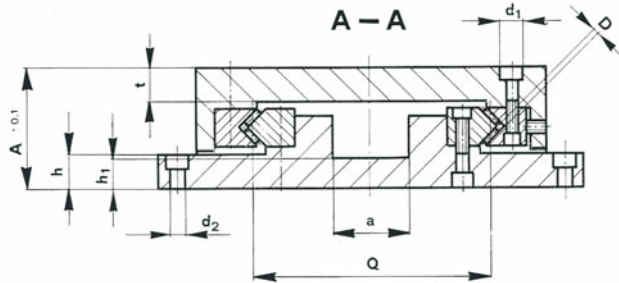
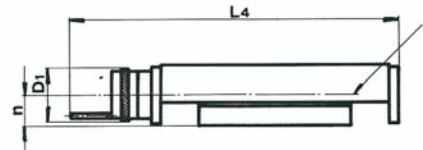
Threaded spindle, turned
 With graduated drum and double nut
 Reading accuracy = 0.02 [mm]
 (Spindle dimensions see dimension D)

↳ Suffix therefor **G 1**

Roller Spindle

↳ Suffix therefor **K 1**

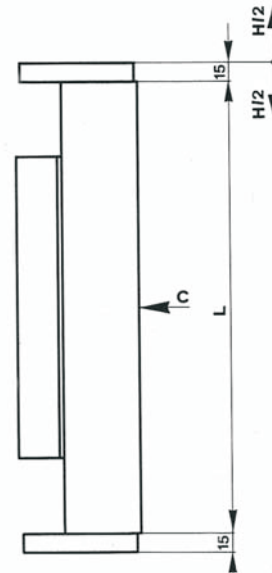
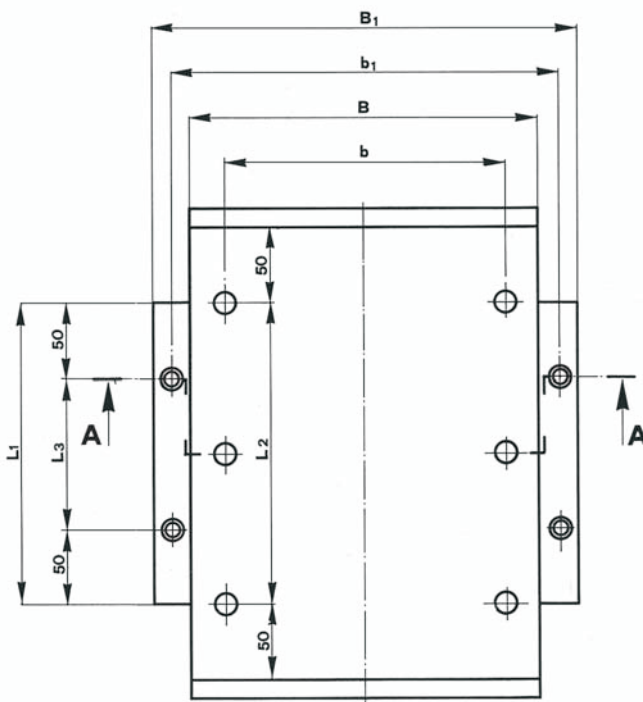
Standard Model : Material : Cast-iron/Steel
 The tables are equipped with Type HW cages, for load carrying cage length see dimension K_t .



Size	D1	L4	n	d	C[kN]	[kg]
NU 15 - 300/200	70	434	38	Tr 18X4	36,5	35
NU 15 - 500/300		634			56,8	54
NU 15 - 700/400		834			77,1	72
NU 25 - 500/300	90	650	46	Tr 24X5	134,8	90
NU 25 - 700/400		850			183	121
NU 25 - 900/500		1050			231,1	152

Ordering Example :

1 Frictionless table
 NU 25-500/300-G 1



Order No.	H	A	B	B ₁	L	Q	K _t	D	L ₁	L ₂	b	d ₁	L ₃	b ₁	d ₂	h	h ₁	a	t	
NU 15 - 300/200	100				300		180		200	2X100			1X100							
NU 15 - 500/300	200	80	230	280	500	146	280	2	300	4X100	178	17	2X100	255	11	22	23	50	25	
NU 15 - 700/400	300				700		380		400	6X100			3X100							
NU 25 - 500/300	200				500		280		300	4X100			2X100							
NU 25 - 700/400	300	100	300	360	700	178	380	3	400	6X100	224	22	3X100	330	13	28	27	60	32	
NU 25 - 900/500	400				900		480		500	8X100			4X100							

Ordering Example :

1 Frictionless table
 NU 15 - 300/200